

Flint Hills Wildland Fire Update

2022 Summary
May 19, 2022





Acreage Burned Analysis

Analysis was conducted during the period of February 14, 2022 to April 30, 2022 to determine the approximate total of acres burned. The analysis conducted does not differentiate between prescribed fire and wildfire. While prior year periods of analysis differ in date range the analysis always encompasses a clear majority of the Spring burning period within the Flint Hills.

If you have questions, or for more information, contact:

Jayson Prentice

Chief, Environmental Data & Projects, Bureau of Air

Kansas Department of Health & Environment

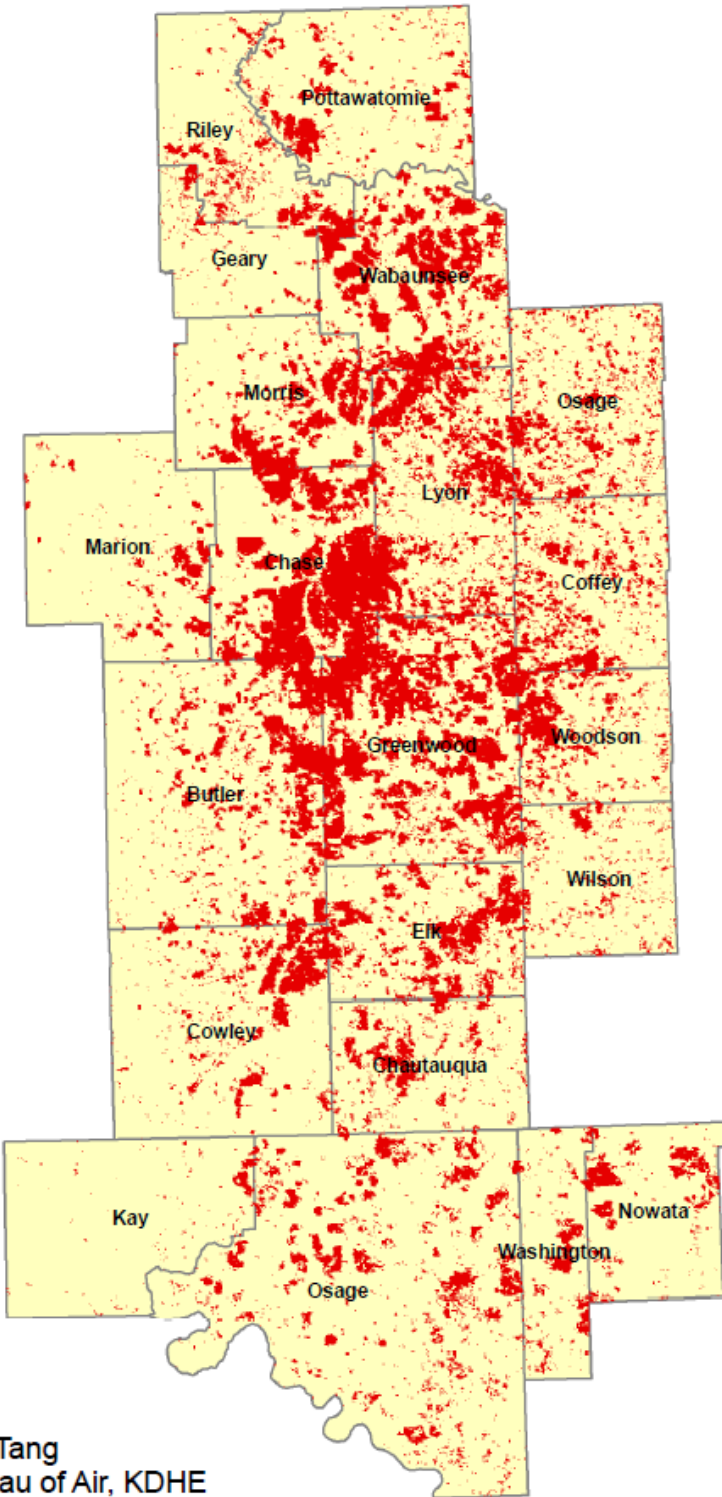
785-291-3782

Jayson.Prentice@ks.gov

Flint Hills Prescribed Fire Update



Flint Hills Acreage Burned (February 14 – April 30, 2022)



<u>County</u>	<u>Acres Burned</u>
Butler	163,895
Chase	237,442
Chautauqua	57,901
Coffey	85,902
Cowley	88,095
Elk	109,933
Geary	17,035
Greenwood	315,605
Lyon	180,190
Marion	37,483
Morris	96,126
Osage (KS)	83,894
Pottawatomie	59,106
Riley	53,700
Wabaunsee	182,259
Wilson	33,592
Woodson	69,422
Nowata (OK)	43,507
Osage (OK)	156,297
Washington (OK)	30,842
Kay (OK)	10,533
Total	2,112,759

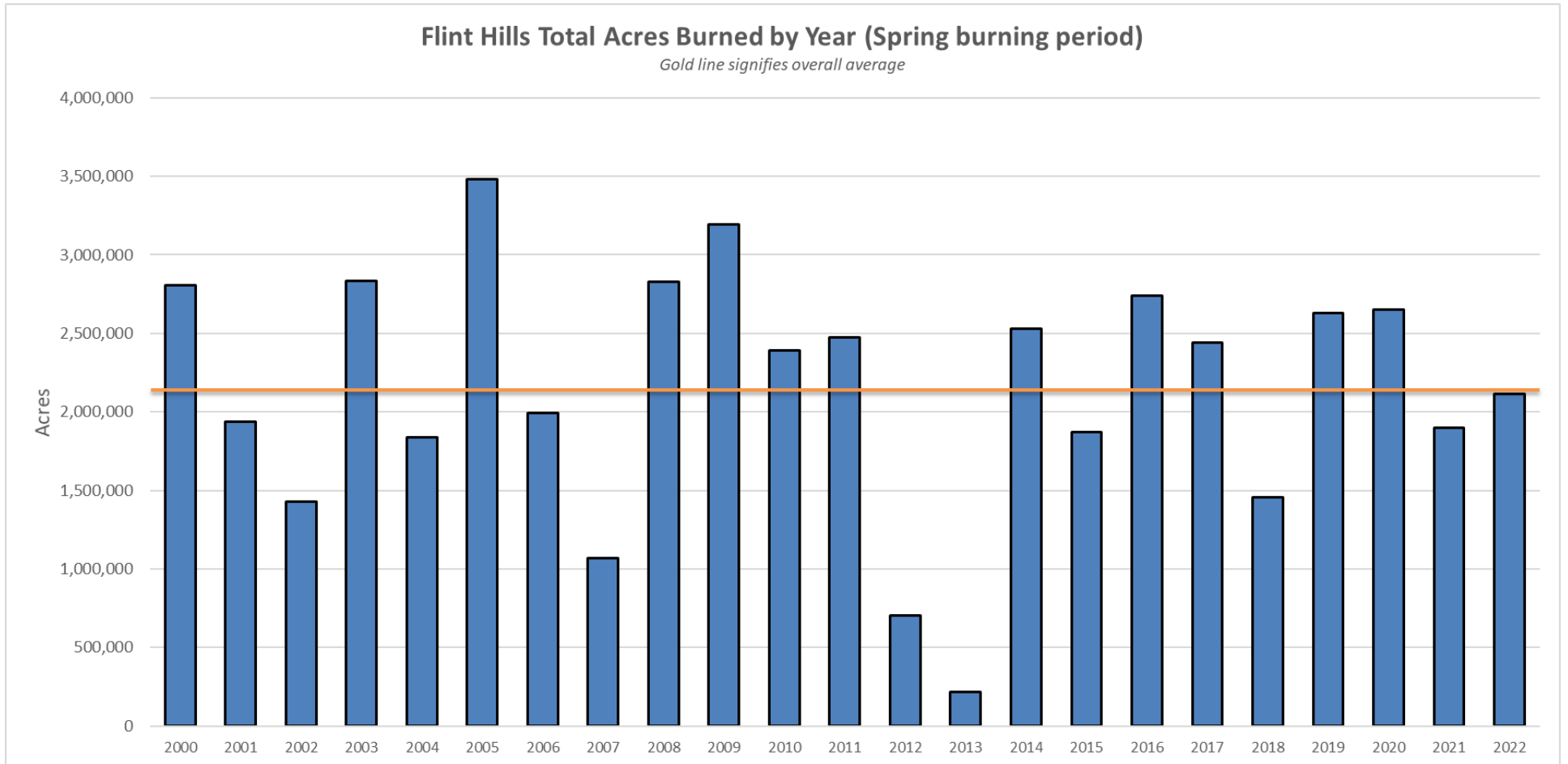
Yao Tang
Bureau of Air, KDHE



Flint Hills Total Acres Burned by Year (Spring burning period)

Year	Acres Burned
2000	2,802,963
2001	1,939,859
2002	1,429,438
2003	2,835,778
2004	1,837,021
2005	3,483,101
2006	1,992,477
2007	1,066,809
2008	2,825,876
2009	3,195,053
2010	2,392,693
2011	2,473,423
2012	706,016
2013	217,377
2014	2,529,468
2015	1,870,018
2016	2,736,791
2017	2,441,355
2018	1,453,748
2019	2,627,737
2020	2,649,203
2021	1,899,225
2022	2,112,759
Average	2,152,365

Flint Hills Prescribed Fire Update



Flint Hills Prescribed Fire Update



Year:	2012	2013	2014	2015	2016	2017	2018	2019	2020	2021	2022
County											
Butler	45,004	13,097	166,442	94,349	245,921	220,221	93,964	240,021	237,628	145,393	163,895
Chase	28,912	5,174	288,529	218,860	318,679	273,258	72,449	332,950	343,359	314,833	237,442
Chautauqua	12,819	3,985	113,499	71,321	94,473	59,353	87,214	110,366	73,515	56,171	57,901
Coffey	26,162	11,166	77,298	81,978	76,450	84,697	50,565	75,029	61,330	55,028	85,902
Cowley	18,193	3,907	92,804	61,036	158,984	99,786	52,758	186,383	149,254	57,422	88,095
Elk	35,027	8,680	167,647	92,990	171,757	126,613	89,809	157,594	139,926	84,975	109,933
Geary	52,418	6,039	47,769	15,583	51,492	62,195	10,965	39,013	70,998	34,889	17,035
Greenwood	29,993	18,873	250,042	247,741	284,624	351,467	148,328	311,482	296,671	219,155	315,605
Lyon	43,336	14,471	143,075	156,975	174,213	151,865	86,242	135,138	159,231	115,879	180,190
Marion	8,324	3,228	44,402	28,124	75,647	68,357	7,043	52,526	83,909	40,711	37,483
Morris	16,155	2,162	107,600	64,433	149,780	118,721	61,376	110,860	147,293	78,288	96,126
Osage (KS)	42,657	10,008	77,901	66,070	64,974	67,229	72,928	50,055	61,870	45,144	83,894
Pottawatomie	124,480	5,961	120,882	63,229	89,114	125,671	39,182	83,245	139,385	77,361	59,106
Riley	85,561	36,201	84,032	50,039	64,110	63,723	32,325	57,407	74,395	41,561	53,700
Wabaunsee	64,047	23,552	240,173	102,349	199,804	194,954	83,832	189,363	231,820	169,966	182,259
Wilson	7,985	8,417	33,236	22,688	23,136	31,090	31,970	31,136	22,997	16,093	33,592
Woodson	19,599	12,124	82,271	82,596	79,276	100,759	47,878	83,647	70,890	53,762	69,422
Nowata (OK)	4,880	4,834	68,217	64,773	48,186	25,051	73,036	66,967	51,970	33,344	43,507
Osage (OK)	36,155	22,147	275,278	206,504	301,258	173,703	248,824	241,457	181,549	197,565	156,297
Washington (OK)	4,309	3,351	48,371	45,669	32,387	14,904	45,515	37,298	27,182	31,877	30,842
Kay (OK)	----	----	----	32,711	32,526	27,738	17,545	35,800	24,031	29,808	10,533
Total Acres	706,016	217,377	2,529,468	1,870,018	2,736,791	2,441,355	1,453,748	2,627,737	2,649,203	1,899,225	2,112,759



Air Quality Data

Air quality data for the period of February 14 – May 1, 2022:

Ozone: Preliminary data indicates the following exceedances of the NAAQS daily 8-hour average maximum of 70 ppb which may have been influenced by wildland fires within the Flint Hills.

March 3, 2022 at the monitor located in/near Miami, OK - 75 ppb

March 3, 2022 at the monitor located in/near Union, OK - 72 ppb

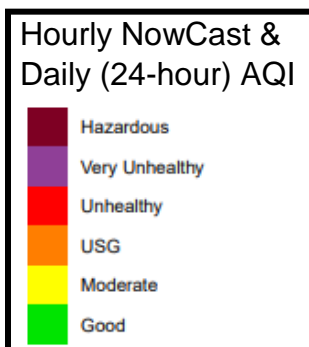
March 3, 2022 at the monitor located in/near Alba, MO - 72 ppb

March 28, 2022 at the monitor located in Wichita, KS - 74 ppb

PM_{2.5}: Preliminary data indicates no exceedances of the NAAQS daily 24-hour average maximum of 35 $\mu\text{g}/\text{m}^3$ which may have been influenced by wildland fires within the Flint Hills.

Air Quality Monitor Data

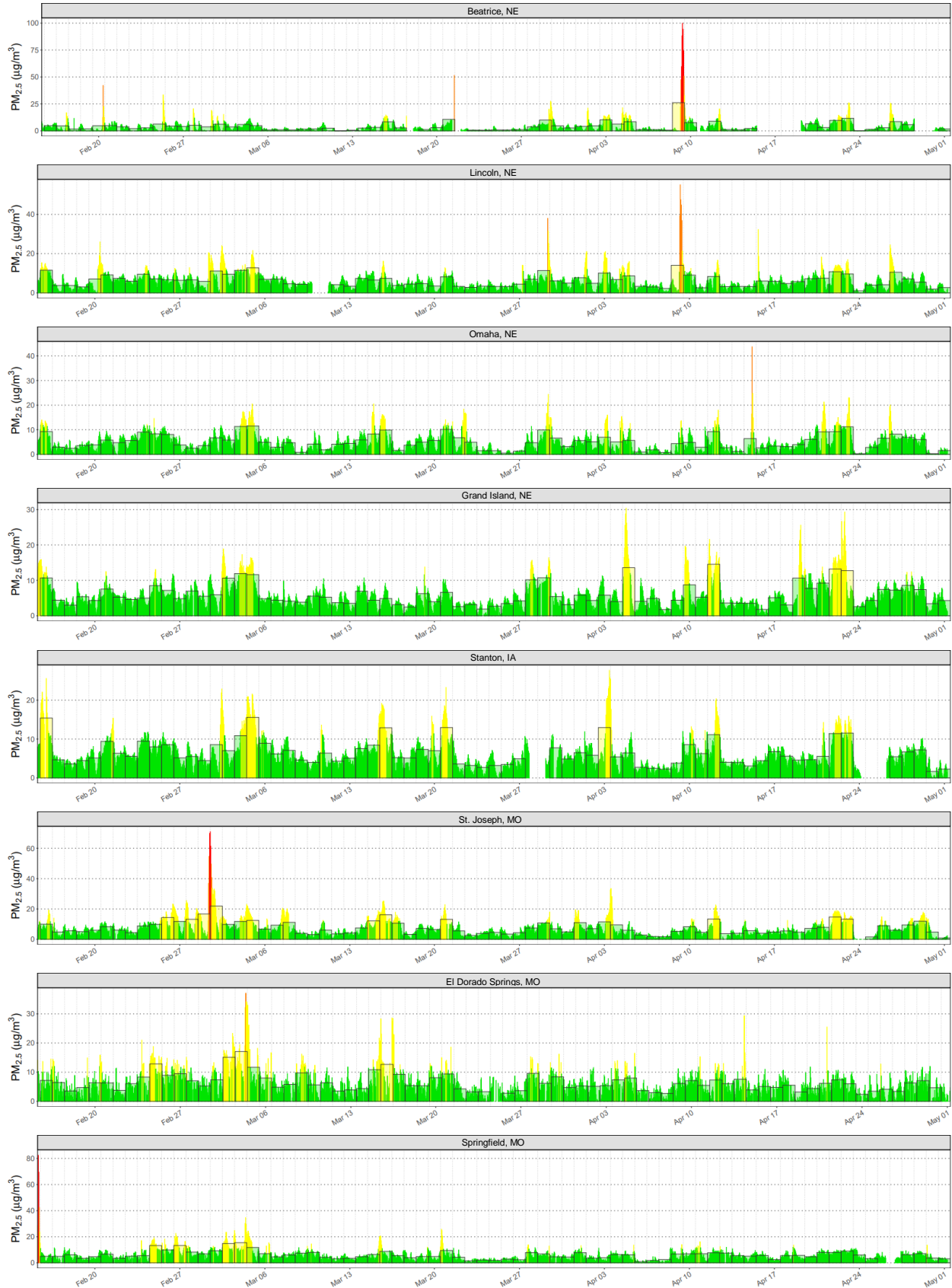
The following graphs encompass many of the regulatory air quality monitors that are near the Flint Hills. Each graph of a single monitor displays the hourly NowCast and daily Air Quality Index (AQI) when compared to the fine inhalable particulates (PM_{2.5}) National Ambient Air Quality Standard. Air quality impacts measured may not always be due to wildland fire smoke and may be due to other regional pollutants or events. All data should be considered preliminary.



Flint Hills Prescribed Fire Update



Flint Hills Prescribed Fire Update



Flint Hills Prescribed Fire Update

