

Name: John Rancher Date Plan Developed: 3/5/2010 Ident No.: N/A

Legal Desc.: SEC TWP RNG County: Geary Field No.: 2

Date burn will be implemented: 4/6/2010 Burn Permit Required: Yes No
(Contact county offices for information on the requirements for legal burns in your county.)

IMPORTANT NOTICE: Parties initiating prescribed burns may be liable for damages resulting from the fire and cost of suppression by others, should the fire escape from the designated area.

A. OBJECTIVE OF BURN: (Check all that apply) (WSG = warm season grass; CSG = cool season grass)

- | | | | |
|---|-------------------------------------|---|--------------------------|
| Control woody plants (full leaf) | <input checked="" type="checkbox"/> | Improve wildlife habitat (before WSG emerge) | <input type="checkbox"/> |
| Stimulate WSG (1 to 3 inches) | <input checked="" type="checkbox"/> | Remove litter on WSG (1 to 3 inches) | <input type="checkbox"/> |
| Reduce CSG (1 to 3 inches) | <input checked="" type="checkbox"/> | Stimulate forbs (before forbs grow) | <input type="checkbox"/> |
| Distribute grazing on WSG (1 to 3 inches) | <input checked="" type="checkbox"/> | Reduce wildfire hazard on WSG (1 to 3 inches) | <input type="checkbox"/> |

B. DESCRIPTION OF BURN AREA:

1. Present plant cover:

Woody Plants

Species	Size/Height	Plant/Acre
Dogwood	4'	200
Smooth Sumac	3'	100
Elm	10-20'	10

Herbaceous Plants

Species	Cured	Plants/Acre	Lbs/Acre	Height
CSG	Green	na	200	3"
WSG	X	na	1500	4-6"
Broad Leaf Plants	X	na	100	4-6"

2. Describe existing firebreaks and identify contingency firebreaks: (Show on burn plan map.)

(Use arrow key to advance to next line.)

Dozed in firebreaks exists in the steep, treed areas in the NE corner of the ranch. A firebreak will be burned in around the entire ranch except where roads and highways provide an adequate firebreak. A mowed firebreak will be used in the SE corner. This will be done to provide protection to the 9 farmsteads that surround the ranch.

C. PREPARATION

1. Obtain burn permit, if required.

2. Fireboss: John Rancher - Owner

3. Firebreak construction: (Show on burn plan map.) *Date = Date or month the firebreak will be constructed.

	Plowed	Disked	Mowed	Burned	CSG
Width	20'		30'	50'	250'
Length	11,000		1300'	28,584	1900'
*Date	3/20/10		3/20/10	4/6/10	Smooth Brome - Existing

Legal Desc.: SEC TWP RNG

4. Specified conditions for backfire, flankfire, and headfire:

	Backfire	Flankfire	Headfire
a. Air temperature (30° to 80° F)	50-65	50-80	50-80
b. Relative humidity (20 to 80%)	40-60%	30-80%	30-80%
c. Wind direction	SW	SW	SW
d. Wind speed (4 to 15 mph)	4-8	5-10	10-15
e. Soil moisture conditions	Moist	moist	moist

5. Adjacent areas:

- a. Describe special precaution areas: (Show on burn plan map.) (Use arrow key to advance to the next line.)
 East - Ungrazed native grass & timber/leaf litter, fractured limestone ledge with flammable plant material.
 North - Timber/leaf litter, 5 houses, backfire prior to starting head fire.
 West - 3 houses, backfire prior to starting head fire.
 South - 1 house, backfire prior to starting head fire.
- b. Describe potentially hazardous areas: (Show on burn plan map.) (Use arrow key to advance to the next line.)
 Power lines - very high, 100+ feet off the ground
 Deep/Steep draws with thick caprock - Difficult to get out of on an ATV, no access for water truck.
- c. Describe protection plan for potentially hazardous areas: (Show on burn plan map.) (Use arrow key to advance to the next line.)
 Stay out of smoke as it enters powerlines, check power poles as soon as fire passes and smoke is cleared.
 Be certain of exit points and safe areas before entering draws.
- d. Necessity of snag felling: Required Not Required
 If required, describe plan: (Show on burn plan map.) (Use arrow key to advance to the next line.)
 Clear trees and branches from firebreaks.

D. IMPLEMENTATION

1. Starting time of burn: 9:00 AM

2. Equipment and manpower:

To activate this Table, open and save Form KS-ECS-338wksht.xls to the hard drive of your personal computer. Double click the Table to enter values. Position the Table and click outside the Table to exit and save entries.

Minimum Requirements (calculate columns per number of firelines)					
Execution of Burn	Vehicles per fire or fireline	Drip Torch	Manpower	Maps	Communication equipment
Number of firelines 2					
Four-wheeler unit w/spray equipment (2 per fireline, 1 person per unit)	2		4		
Drip torch (1 per fireline w/supplemental fuel, 1 person per torch)		2	2		
Site and plan maps (1 per vehicle)				10	
Communications equipment (1 per fireline)					2
**Fire suppression unit (1 per fireline, 2 persons per unit)	1		4		
Mop-up					
Communication equipment (1 per fireline)					2
Fire suppression unit (1 per fireline, 2 persons per unit)	2		4		
Totals	3	2	10	10	2

Legal Desc.: SEC TWP RNG

2. Equipment and manpower continued:

Auxiliary water supplies located in a strategic defensive position: (Show location of auxiliary supply on burn plan map and describe.) (Use arrow key to advance to the next line.)

2 water supply trucks - 300 gallon capacity each - Central location in denuded area of the pasture.

3 spring tanks rigged to fill ATV sprayers at about 2 gal/min.

Well at headquarters

**Auxiliary fire suppression unit: (Show location of unit on burn plan map and describe.) (Use arrow key to advance to next line.)

None

Equipment or manpower needed in addition to the minimum requirements: (List and explain.) (Use arrow key to advance to the next line.)

None

Location map: Import ArcView image, reference conservation plan map, or provide a sketch denoting field boundary, field number, land use, acres, and scale used.



Technical Service Provider

Layout by _____ Date _____

Designed by _____ Date _____

Checked by _____ Date _____

Approved by _____ Date _____

Producer's Statement

The design of this practice has been discussed with me, and I concur with the design. **No substitutions are allowed without the approval of the technical service provider.**

Signature _____ Date _____

Scale:

Map Notes: The Danger/Warning areas are houses, The solid yellow line is the property line. You will see in 3 areas where we are burning the neighbors property at the same time. The water refill points are developed springs that are setup to fill an ATV sprayer.

See Attached "Prescribed Burn Plan Map"

Certification

This applied practice meets Kansas standards and specifications.

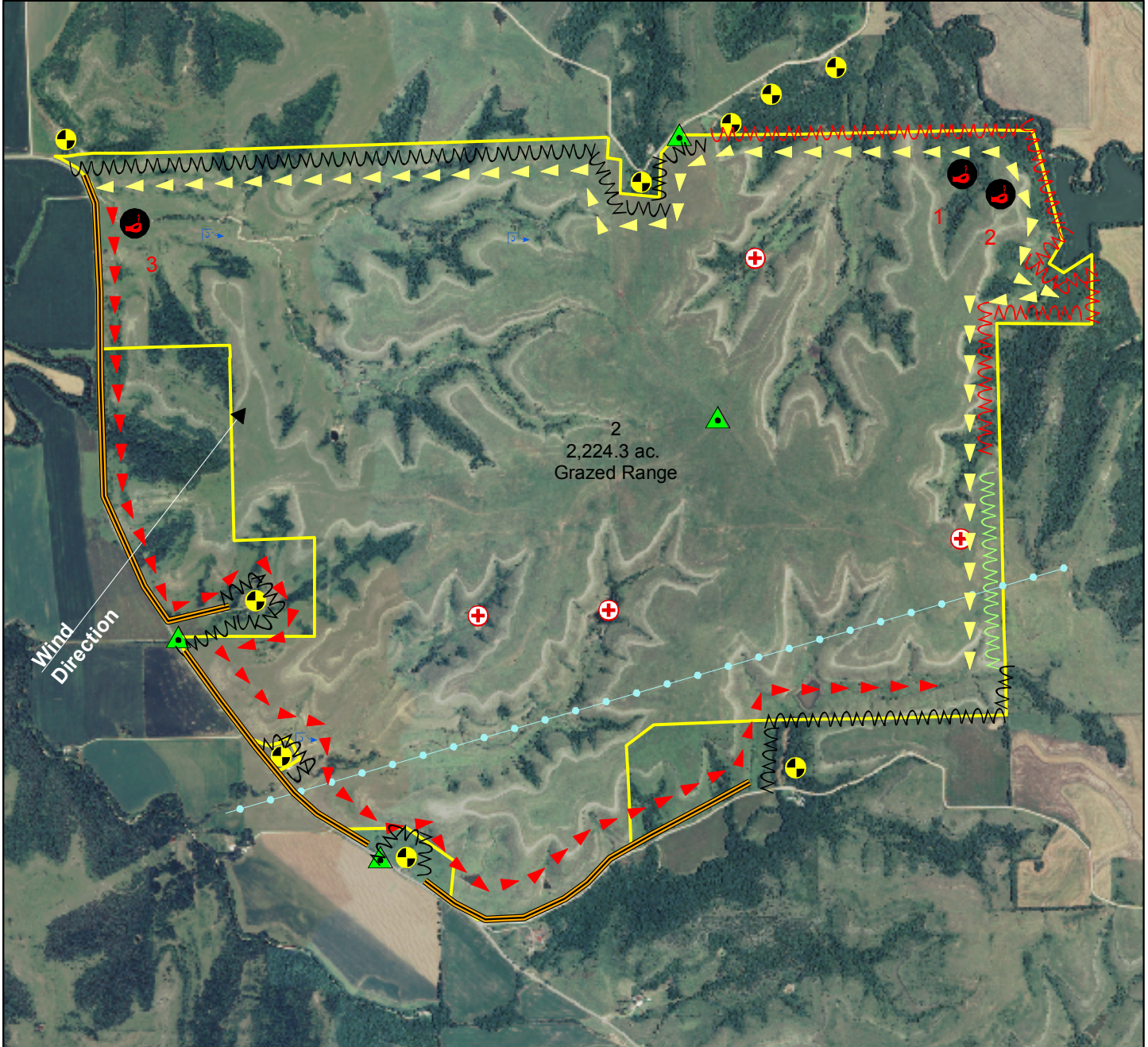
PRESCRIBED BURNING PLAN MAP

Date: 4/14/2010

Customer(s): Example
 District: GEARY COUNTY CONSERVATION DISTRICT

Field Office: JUNCTION CITY SERVICE CENTER
 Agency: USDA-NRCS
 Assisted By:
 State and County: KS, RILEY

Legal Description:



Burn Plan Lines	Dozed Firebreak	Power Line	<all other values>	Water Refill Point
LINETYPE	Head Fire	Road Firebreak	POINTTYP	Ignition Point
Backfire	Mowed Firebreak	Wind Direction	Safe Zone	Danger/Warning
Burned Firebreak	Burn Plan Points	Water Truck		

